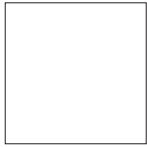


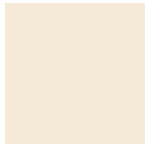
COLOURS AND COVERINGS

COLORI E RIVESTIMENTI

Techno-polymer / Tecnopolimero



00
White / Bianco



01
Beige / Beige



54
Sand / Sabbia



13
Brown / Marrone



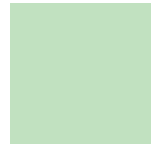
52
Turtledove / Tortora



53
Caramel / Caramello



51
Sage green / Salvia



03
Light green / Verdino



05
Light blue / Azzurro



34
Light blue / Azzurro



98
Pale blue / Avio



99
Lavender / Lavanda



08
Blue / Blu



09
Dark Blue / Blu scuro



11
Night Blue / Blu notte



24
Forest green
Verde foresta



23
Military green
Verde militare



41
Green / Verde



42
Green / Verde



02
Yellow / Giallo



38
Saffron / Zafferano



36
Mustard / Senape



07
Apricot / Albicocca



33
Orange / Arancione



20
Lobster / Aragosta



12
Brick / Mattone



06
Red / Rosso



40
Violet / Viola



43
Easy pink / Ciclamino



22
Bordeaux / Bordeaux



39
Brown / Marrone



10
Black / Nero



21
Grey / Grigio



04
Grey / Grigio



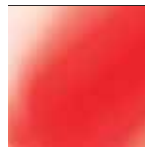
14
Pearl grey / Grigio perla



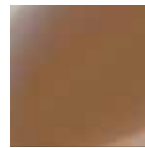
44
Transparent
Trasparente



46
Transp. green
Verde trasp.



45
Transp. red
Rosso trasp.



47
Transp. Amber
Ambra trasp.



ECO

K King Fabric / Tessuto King



4021

3082

3030

6001

6052

7022



8011

1008

1012

1033

2003

5001



6091

7019

1025

8006

4032

6034



2007

8032

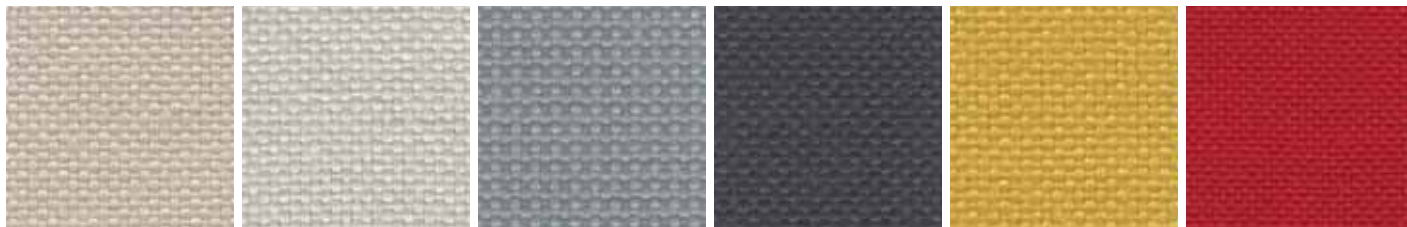
- Composition: 100% POLYESTER - TREVIRA CS
- Abrasion: UNI EN ISO 12947-2 80.000 Cycle Martindale $\pm 10\%$
- Light Resistance-Xenotest: UNI EN ISO 105-B02 / 6 (tol from 5 to 8)
- Fire proof: UNI 9174 - 8456 Class C1, UNI 9175 Class 1, DIN 4102 Class B1, NF 92501-7 Class M1, NF D 60013 Class AM18, EN 1021-1 & 2, BS Crib 5, BS 7176 Class Medium Hazard, EN 13773 Class 1, OENORM 3800-1 Class B1,Q1,TR1, California TB117, USA NFPA 701, USA NFPA 260, IMO A 652 (16) Part 8 Upholstery
- Maintenance: Standard 60° C cotton cycle.

Visit www.fidivi.com for complete colours range / Visionate la completa gamma colori su www.fidivi.com

COLOURS AND COVERINGS

COLORI E RIVESTIMENTI

L King L Fabric / Tessuto King L



1010

1025

8014

8010

3090

4027



6071

- Composition: 100% POLYESTER
- Abrasion: UNI EN ISO 12947/2 70.000 Cycle Martindale $\pm 10\%$
- Light Resistance-Xenotest: UNI EN ISO 105-B02 / 6 (tol from 5 to 8)
- Fire proof: UNI 9174 - 8456 Class C1, DIN 4102 Class B1, NF P 92501-7 Class M1, IMO Res. A652 (16), NF D 60013 Class AM18, EN 1021-1 & 2, BS 5852 part II Crib 5, BS 7176 Medium Hazard, ONORM B 3825-Onorm A 3800-1 Class B1-Q1-TR1
- Maintenance: Use vacuum-cleaner, don't brush.

DK Kvadrat Fabric (Steelcut2) / Tessuto Kvadrat (Steelcut2)

435

445

535

550

635

255



365

655

975

950

835

780



760

685

625

140

155

180



190

110

- Composition: 90% New wool worsted - 10% Nylon
- Abrasion: Approximately 80.000 Martindale rubs, EN ISO 12947
- Lightfastness: Note 5-7, ISO 105-B02
- Fire proof: AS/NZS 3837, class 2, BS 5852 Crib 5 with treatment, BS 5852 part 1, DIN 4102 B2, EN 1021-1/2, IMO FTP Code 2010 Part 8, NF D 60 013, ÖNORM B1/ Q1, UNI 9175 1IM, US Cal. Bull. 117-2013, NFPA 260, AS/NZS 1530.3, SN 198 898 5.3

COLOURS AND COVERINGS

COLORI E RIVESTIMENTI

DK Kvadrat Fabric (Remix2) / Tessuto Kvadrat (Remix2)



923

422

653

632

612

233



672

942

982

973

743

722



733

753

692

682

123

143



113

183

- Composition: 90% wool, 10% nylon
- Abrasion: Approximately 100.000 Martindale rubs, EN ISO 12947
- Lightfastness: Note 5-7, ISO 105-B02
- Fire proof: EN 1021-1/2, BS 5852 part 1, Önorm B1/Q1, NF D 60 013, UNI 9175 11M, AS/NZS 1530.3, US Cal. Bull. 117-2013, NFPA 260, IMO FTP Code 2010: Part 8, AS/NZS 3837, class 2, BS 5852 Crib 5 with treatment

Visit www.kvadrat.dk for complete colours range / Visionate la completa gamma colori su www.kvadrat.dk

DK Kvadrat Fabric (Umami) / Tessuto Kvadrat (Umami)



231

251

471

221

621

851



731

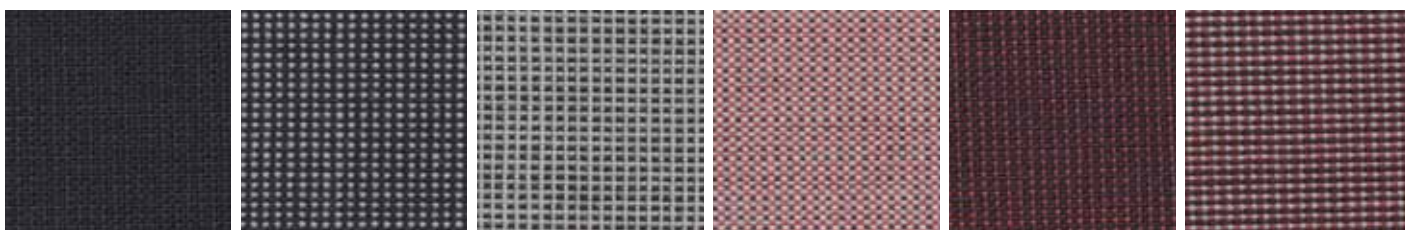
651

761

441

711

721



181

191

111

611

661

551



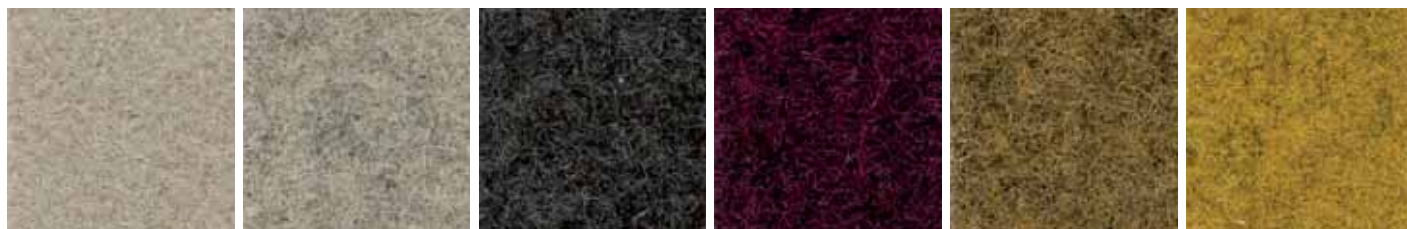
871

- Composition: 90% wool, 10% nylon
- Abrasion: Approximately 80.000 Martindale rubs, EN ISO 12947
- Lightfastness: Note 6-7, ISO 105-B02
- Fire proof: EN 1021-1/2, BS 5852 part 1, NF D 60 013
UNI 9175 1IM, US Cal. Bull. 117-2013, IMO A.652 (16)
AS/NZS 3837, class 2 , IMO FTP Code 2010 Part 8, BS 5852 Crib 5 with treatment

COLOURS AND COVERINGS

COLORI E RIVESTIMENTI

B Blazer Fabric / Tessuto Blazer



CUZ47

CUZ86

CUZ67

CUZ1B

CUZ88

CUZ82



CUZ63

CUZ66

CUZ18

CUZ1K

CUZ1C

CUZ1L



CUZ1N

CUZ1E

CUZ24

CUZ62

CUZ1W

CUZ1X



CUZ1Z

CUZ32

- Composition: 100% VIRGIN WOOL
- Abrasion: BS EN ISO 12497-2 65.000 Cycle Martindale
- Light Resistance-Xenotest: UNI EN ISO 105-B02 / 5
- Fire proof: BS EN 1021 Part 1, BS EN 1021 Part 2, BS 7176 Low Hazard, BS EN 13501-1:2007 Class D, NF D 60-013 AM18, UNI 9175:2010 Class 1IM, BS476 part 7 Class 1, ONORM B 3825
- Maintenance: Use the vacuum-cleaner.

TF Fenice Fabric / Tessuto Fenice



505

451

201

351

601

101



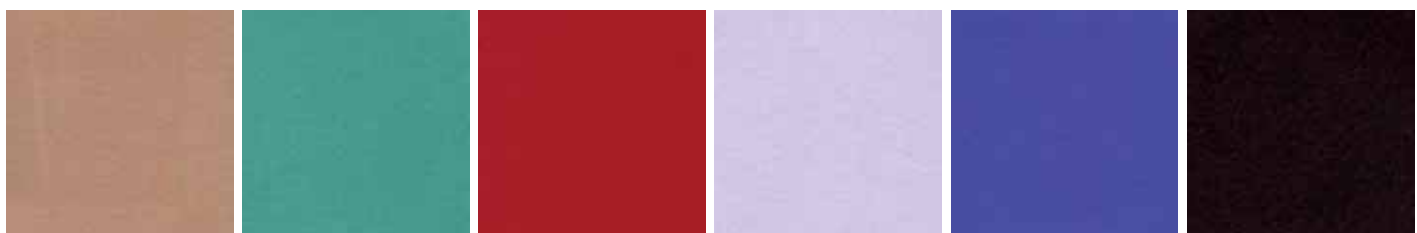
603

551

- Composition: 75% WOOL - 25% POLYAMMIDE
- Abrasion: UNI EN ISO 12497:2000 100.000 Cycle Martindale $\pm 20\%$
- Light Resistance-Xenotest: UNI EN ISO 105-B02 / 4 (tol from 3 to 5)
- Fire proof: IT - CLASSE 1 IM Using a standard FR polyurethane foam 25kg/mcu density, CAL 117-2013 EN-1021 Part 1-2 using a standard foam 20/22 Kg/mcu density
- Maintenance: Use vacuum-cleaner, don't brush.

Visit www.pugirg.it for complete colours range / Visionate la completa gamma colori su www.pugirg.it

M Miki Fabric / Tessuto Miki



6334

6490

6432

6445

6713

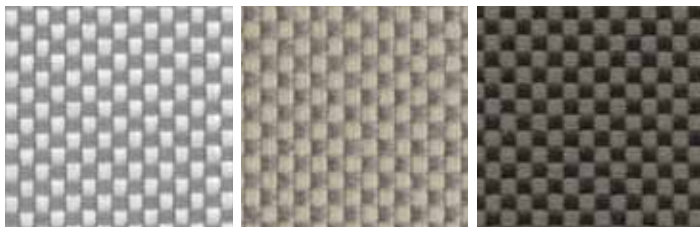
NERO

- Composition: Composizione 100% PL 65/75 g/m² – Composition 100% PL 65/75 g/m²
- Light Resistance-Xenotest: UNI EN ISO 105-B02 / 01
- Fire Proof: USA Cal. Bul. 117 June 2013
- Maintenance: Dust with a soft and dry cloth.

COLOURS AND COVERINGS

COLORI E RIVESTIMENTI

TX Textsilk Fabric / Tessuto Textsilk



S-3

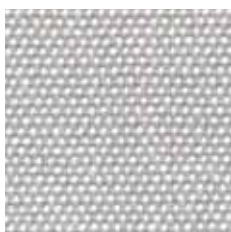
S-4

S-6

- Composition: 100% Olefin
- Finish: Teflon® Water & oil repellent
- Color Fastness: Light Fastness UNI EN ISO 105-B02:2001 - 8 (max 8), Fastness to rubbing UNI EN ISO 105-X12:1996 - 4-5 (max 5), Swimming Pool water fastness UNI EN ISO 105-E03:1997 - 5 (max 5)
- Physical Characteristics: Breaking Strength UNI EN ISO 13934-1 - Warp 1877N - Weft 980N, Tear resistance UNI EN ISO 13937-3 - 81,4 N - 54,2 N, Abrasion Resistance UNI EN ISO 12947 (part 1 & 2) - 20.000 cycles, Pilling resistance UNI EN ISO 12945-2 - 5 (max 5), Dimensional Change in washing UNI EN 25077:1996 -0,4% -0,3%, Spray test UNI EN 24920 - 5 (max 5)

Visit www.etsilk.com for complete colours range / Visionate la completa gamma colori su www.etsilk.com

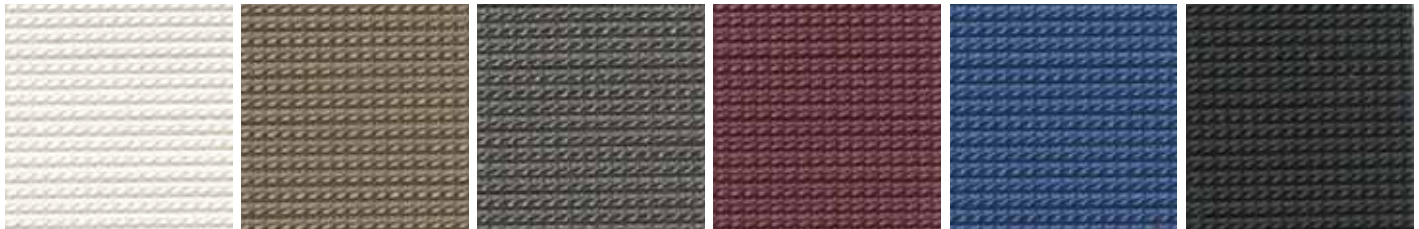
GR Progarden Fabric / Tessuto Progarden



012 LINEN

- Composition: 100% yarn dyed acrylic
- Martindale (ISO 12947-2): 15.000 cycles
- Dimensional change after washing at 40°C and drying (warp/weft) (ISO 5077): ± 2%/0%
- Breaking strength (warp/weft) (ISO 13934-1): 200/70 daN
- Elongation at break (warp/weft) (ISO 13934-1): 25%/25%
- Tear strength (warp/weft) (ISO 13937-1): 7/3,7 daN
- Resistance to seam (warp/weft) (ISO 13935-1): 50/50 daN
- Air permeability (ISO 9237): 65 l/m²/s
- Finishing: Water repellent Teflon/Scotchgard treatment, dirt repellent and anti-mould treatment
- Spray Test (ISO 4920): 4 out of 5
- UV Colour fastness (ISO 105 B02): 5/8 out of 8
- Colour fastness to weather (ISO 105 B04): 5/8 out of 8
- Colour fastness after washing at 40°C (ISO 105 C06): 5 out of 5

V Vogue Fabric / Tessuto Vogue



0002

0009

0001

0015

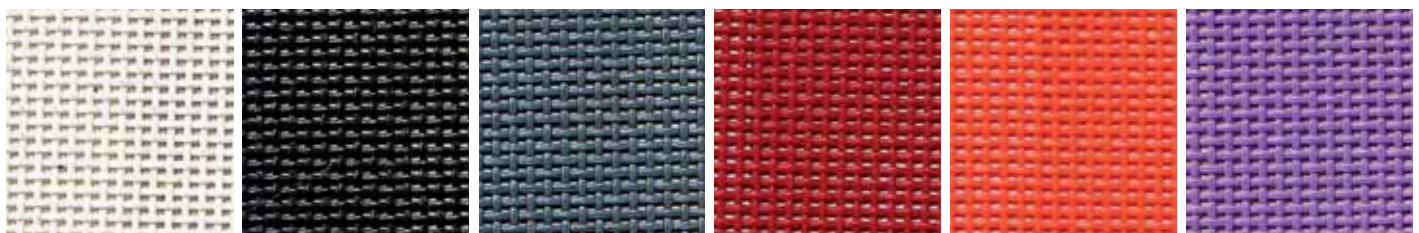
0018

0031

- Composition: Vinyl / Urethane Topcoat
- Abrasion: 100.000 cycles Martindale (EN ISO 12947:1999 Part 2)
- Fire proof: EN 1021 Part 1 & 2, UNE 23.727-90 1R/M.2, NF P 92-503/M2, DIN 4102 B2, UNI 9175 (1987) / UNI 9175/FA1 (1994) Classe 1.IM (UNO I EMME), ÖNORM B 3825, Gruppe 1 - Schwerbrennbares Verhalten, ÖNORM A 3800 Teil 1, Qualmbildungsklasse Q1 - schwachqualmend IMO FTP 2010 Code MSC.307 (88) Part 8 3.1 & 3.2, FMVSS 302, FAR 25/853, (MED) Marine Equipment Directive (in its current valid version), ECE R118 (replaces Directive 95/28/CE), EN 71-2:2006+A1:2007 - Safety of toys - Part 2: Flammability, Light Resistance-Xenotest: UNI EN ISO 105-B02 / 01, Far 25/853

Visit www.spradling.eu for complete colours range / Visionate la completa gamma colori su www.spradling.eu

R Mesh Fabric / Tessuto Rete



R01

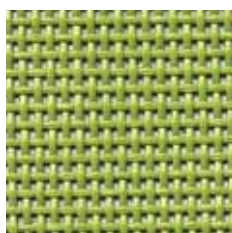
R02

R03

R04

R05

R06



R07

- Composition: Polyvinyl 70% - Polyester 30%
- Warp Tensile Strength: 310Kg/5cm
- Weft Tensile Strength: 270Kg/5cm
- Fire retardant on request

Visit www.plastitex.com for complete colours range / Visionate la completa gamma colori su www.plastitex.com

COLOURS AND COVERINGS

COLORI E RIVESTIMENTI

E Simil leather Aurea / Ecopelle Aurea



1

2

3

5

6

7



8

9

10

11

14

15



16

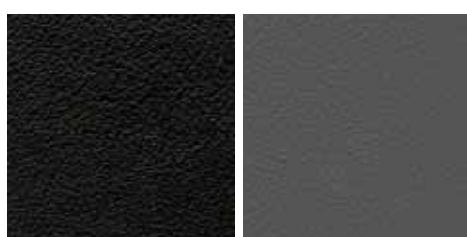
17

19

21

22

23



26

28

- Composition: 72% PVC - 3% PU - 25% COTTON
- Abrasion: EN ISO 5470-2 50.000 Cycle Martindale
- Light Resistance-Xenotest: UNI EN ISO 105-B02 / 6
- Fire proof: IMO resolution A.652 (16): 1989, BS 5852 CRIB 5, BS 5852-1 PART I, EN 1021-2, UNI 9175 CLASSE 1, TB 117 sez. E - p.1 (California)
- Maintenance: Dust gently or pass the surface with a damp cloth.

C Leather / Cuoio



101

102

106

108

109

111

- Composition: 100% Grain Leather, Italian tannery
- Light Resistance: IUF/101
- Fire proof: CAL TB 117-00, Section E -part 1; BS 5852/90 section 4 (CRIB 5); UNI 91/75 Classe 2IM
- Maintenance: Dust gently or pass the surface with a damp cloth.

P Leather / Pelle



101P

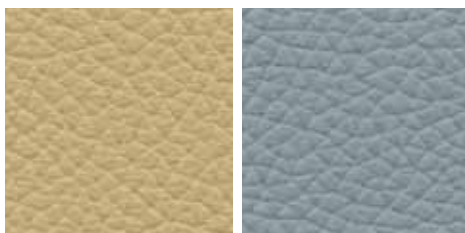
102P

106P

108P

109P

110P



111P

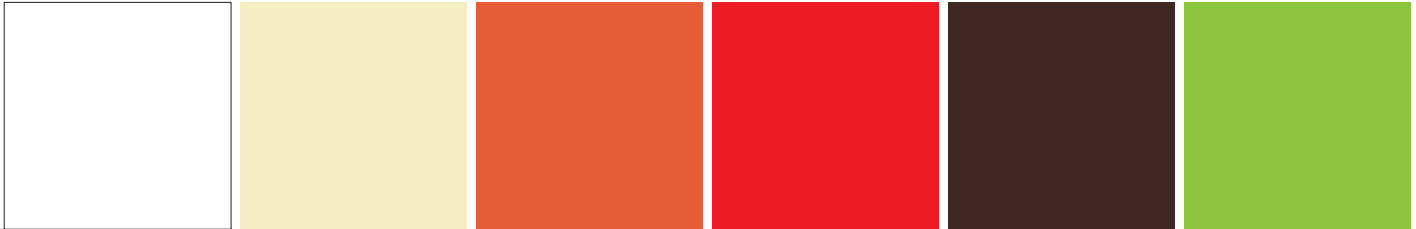
112P

- Composition: 100% Top Grain Leather, Italian tannery
- Light Resistance-Xenotest: UNI EN ISO 105-B02 / 6
- Fire proof: BS EN 1021 Part 1, BS 1021 Part 2, BS 5852 Part 2 (with special fire-retardant padding)
- Maintenance: Dust with a soft and dry cloth.

COLOURS AND COVERINGS

COLORI E RIVESTIMENTI

PR Bonded leather / Pelle rigenerata



2001

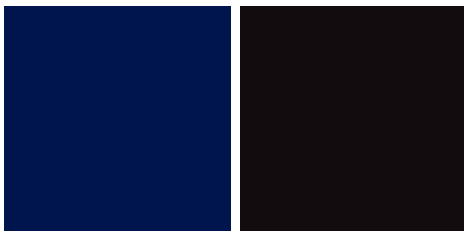
94

24

2006

2000

25



23

6

- Composition: 65% Natural Leather Fibres - 18% Natural latex - 10% Water - 5% Grease
- Light Resistance-Xenotest: UNI EN ISO 105-B02 / 01
- Fire proof: CAL TB 117E, part 1; Cigarette Test BS 5852:part 1:1979 – schedule 4 part 1; Match Test BS 5852: part 1:1979 – schedule 5 part1;
- Maintenance: Dust gently or pass the surface with a damp cloth.

Bases and frames wooden finishes / Finiture legno basi e telai



00 White stained / Bianco



F Natural Beech / Faggio naturale



RN Natural Oak / Rovere Naturale



NC Walnut stained / Noce



W Wengé stained / Wengé



10 Black stained / Nero

F-W-B-N-NC finishes arise from Beech Essence. RN finish come from Oak Essence
Le finiture F-W-B-N-NC derivano da essenza di Faggio. La finitura RN deriva da essenza di Rovere.

Metal finishes / Finiture metalli



White / Bianco



Grey / Grigio



Black / Nero



Chromed / Cromato



Satin / Satinato